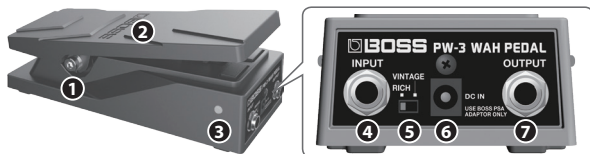


Before using this unit, carefully read "USING THE UNIT SAFELY" and "IMPORTANT NOTES." After reading, keep the document(s) including those sections where it will be available for immediate reference.

Main Features

- Unprecedented "RICH" wah sound, in addition to guitarists' favorite "VINTAGE" mode.
- Compact space-saving wah pedal ideal for pedalboard.
- BOSS-traditional durability and reliability with robust aluminum diecast body.
- Dual indicator shows the ON/OFF status just at a glance.

Panel Descriptions



1. Pedal torque screw

You can change the pedal torque (the force or load required to pivot the pedal) by adjusting the screw located on the right side of the unit.

- * Use a hexagon socket screw key (5 mm) to adjust the screw.
- * Take care not to overtighten the screw; doing so may damage the unit.

2. Pedal

Controls the wah tone.

Turning the wah on/off

Press down strongly on the toe of the pedal to switch the wah on/off.

- * When you operate the unit, please be careful not to get your fingers pinched between the movable part and the panel. In places where small children are present, make sure that an adult provides supervision and guidance.
- * Do not insert your hand or fingers into any opening.

3. Dual indicator (both sides)

This indicator shows the wah on/off status and also provides a battery check function.

- * When operating on battery power only, the unit's indicator will become dim when battery power gets too low. Replace the battery as soon as possible.

4. INPUT jack

Connect your electric guitar or electric bass here.

- * **The INPUT jack doubles as the power switch.** Power to the unit is turned on when you plug into the INPUT jack; the power is turned off when the cable is unplugged. Remove the plug when you're not using the unit.

5. Tone switch

This lets you switch the tone of the wah.

RICH	A new wah sound with a distinctively thick low range that cannot be obtained from a conventional wah.
VINTAGE	A wah sound that reproduces a vintage wah of the '60s.

6. DC IN jack

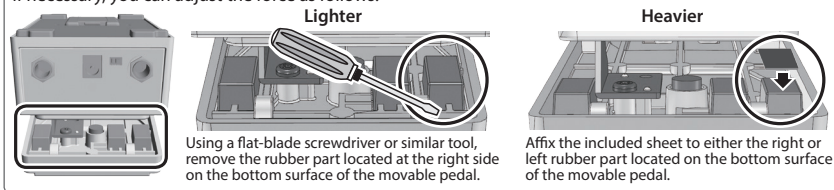
Accepts connection of an AC Adaptor (PSA series: sold separately). By using an AC Adaptor, you can play without being concerned about how much battery power you have left.

- * We recommend that you keep batteries installed in the unit even though you'll be powering it with the AC adaptor. That way, you'll be able to continue a performance even if the cord of the AC adaptor gets accidentally disconnected from the unit.

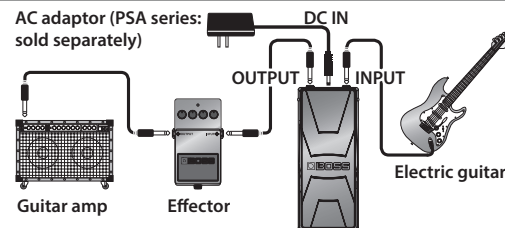
7. OUTPUT jack

Connect this to your amp or to another effect unit.

The unit is designed so that you will not normally need to adjust the force required to turn the wah on/off. If necessary, you can adjust the force as follows.



Connecting Your Equipment



- * To prevent malfunction and equipment failure, always turn down the volume, and turn off all the units before making any connections.
- * Once the connections have been completed, turn on power to your various devices in the order specified. By turning on devices in the wrong order, you risk causing malfunction and/or damage to speakers and other devices.

When powering up: Turn on the power to your guitar amp last.

When powering down: Turn off the power to your guitar amp first.

- * This unit is equipped with a protection circuit. A brief interval (a few seconds) after turning the unit on is required before it will operate normally.
- * Before turning the unit on/off, always be sure to turn the volume down. Even with the volume turned down, you might hear some sound when switching the unit on/off. However, this is normal and does not indicate a malfunction.

Changing the Battery

- * If you handle batteries improperly, you risk explosion and fluid leakage. Make sure that you carefully observe all of the items related to battery that are listed in "USING THE UNIT SAFELY" and "IMPORTANT NOTES."

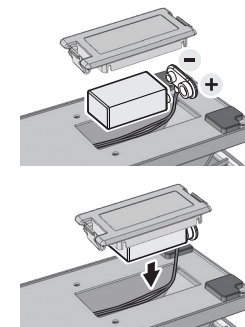
1. Detach the battery cover.

2. Remove the battery from the battery compartment, and detach the battery snap cord.

3. Attach the new battery to the battery snap.

- * Make sure that the battery polarity (+/-) is correct.

4. Place the battery in the battery compartment, and close the battery cover.



Main Specifications

BOSS PW-3: Wah Pedal

Power Supply	DC 9 V: Alkaline battery (9 V, 6LR61)/Carbon-zinc battery (9 V, 6F22), AC Adaptor (sold separately) * Rechargeable Ni-MH batteries cannot be used.
Current Draw	25 mA
Expected battery life under continuous use	Alkaline: Approx. 40 hours Carbon: Approx. 20 hours * These figures will vary depending on the actual conditions of use.
Dimensions	80 (W) x 192 (D) x 58 (H) mm, 3-3/16 (W) x 7-9/16 (D) x 2-5/16 (H) inches (Maximum height) 80 (W) x 192 (D) x 74 (H) mm, 3-3/16 (W) x 7-9/16 (D) x 2-15/16 (H) inches
Weight	800 g/1 lbs 13 oz
Accessories	Owner's Manual, Alkaline battery (9 V, 6LR61), Sheets (for adjusting the force required to turn the wah on/off)
Option (sold separately)	AC adaptor (PSA series)

- * In the interest of product improvement, the specifications and/or appearance of this unit are subject to change without prior notice.